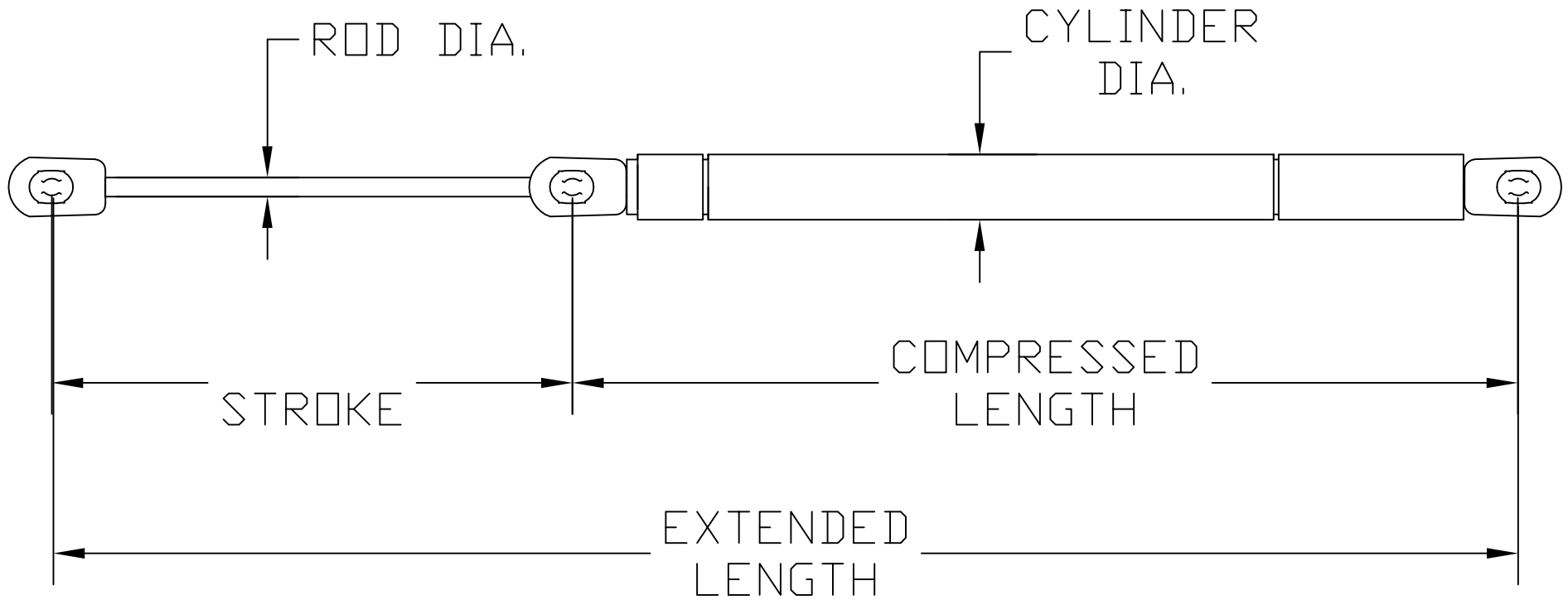


CLOSER- PLASTIC BALL SOCKET END FITTINGS



PART #	TYPE OF END	ROD DIA.	CYLINDER DIA.	STROKE	EXTENDED LENGTH	COMPRESSED LENGTH	POUNDS OF FORCE
500475	^{10mm} BALL & SOCKET	.236	.591	6.75"	17"	10.25"	30
500791	^{10mm} BALL & SOCKET	.314	.708	6"	17"	11"	28
500801	^{10mm} BALL & SOCKET	.314	.708	7.25"	18.5"	11.25"	28
500839	^{10mm} BALL & SOCKET	.314	.75	6.3"	17.1"	10.8"	28