



# RAM-10XL Chute Fed Automatic Compactor 5hp, "W" Series



## FEATURES

- Single cylinder design
- Powder coat finish
- Photo-electric eye, adjustable timer
- OSHA approved door safety interlock
- Internal transformer
- Emergency Stop Button
- Access doors on both sides
- 80% and 100% full indicator lights

## SPECIFICATIONS

### General Specifications

<b>Chamber Capacity</b>	0.29 yd <sup>3</sup>
<b>Cycle Time</b>	28 seconds
<b>Displacement/Hour</b>	33 yd <sup>3</sup>
<b>Ram penetration</b>	5"
<b>Chamber opening</b>	23"L x 30.5"W
<b>Ram height</b>	18"
<b>Ram width</b>	30"
<b>Overall Dimensions</b>	72"L x 42"W x 69"H
<b>Length w/Container</b>	144"
<b>Unit Weight</b>	1854 lbs

### Structural Specifications

<b>Floor</b>	3/8" plate
<b>Ram face</b>	3/8" plate
<b>Main frame/hopper</b>	1/4" plate
<b>Ram Top/base</b>	1/4" plate

### Hydraulic Specifications

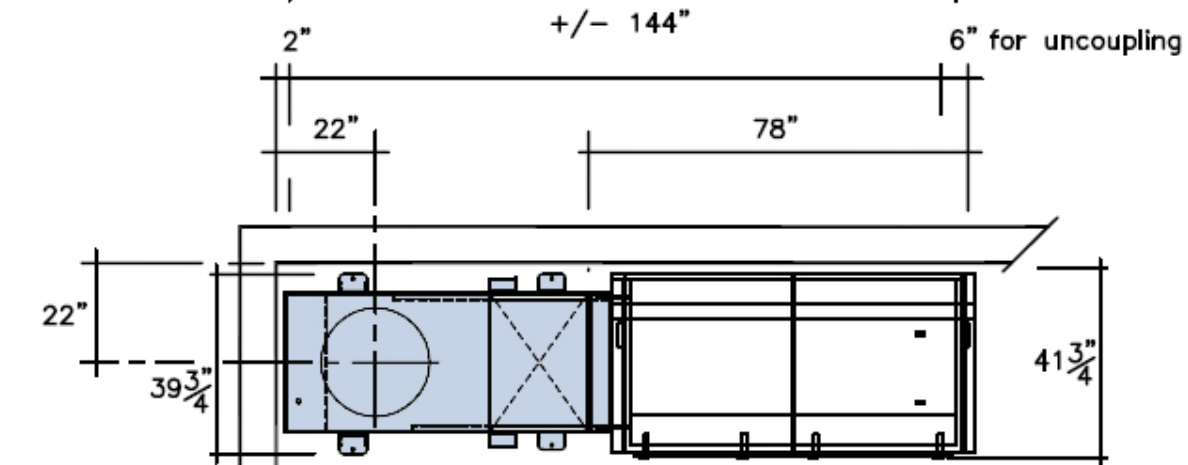
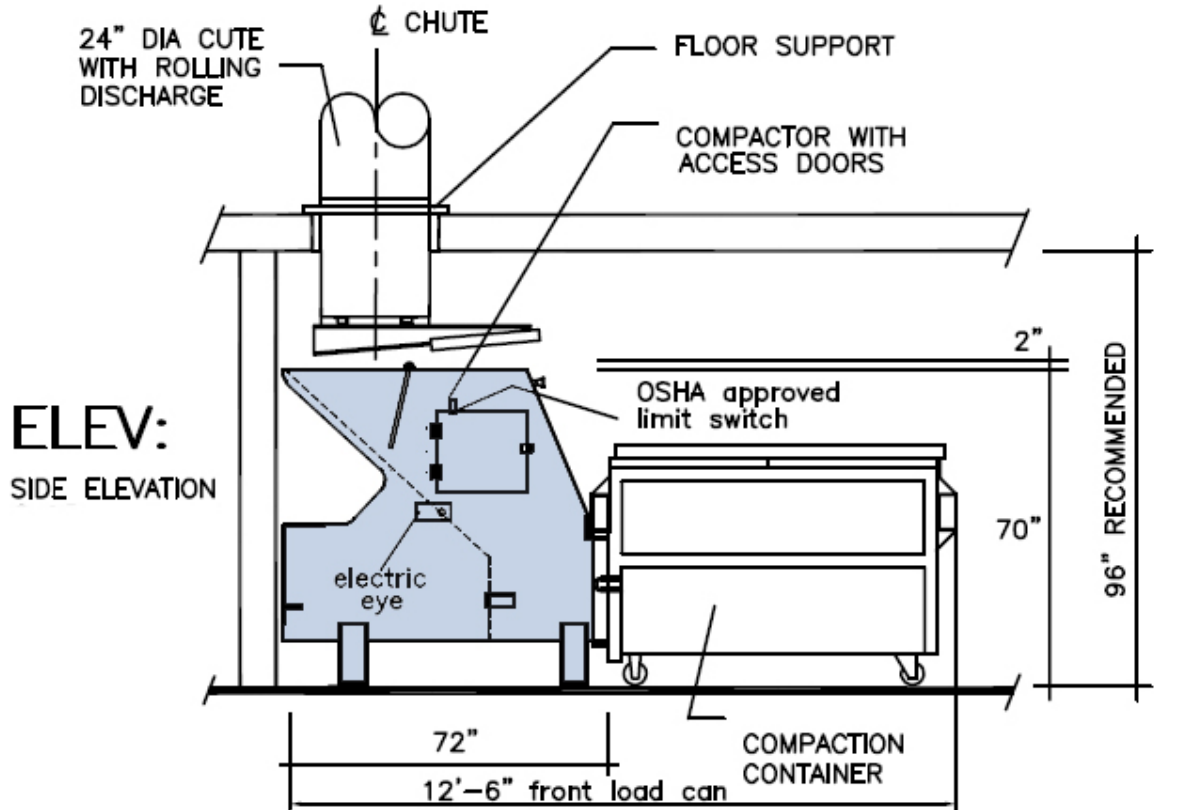
<b>Power Unit</b>	PwrPak
<b>Cylinder</b>	4" bore
<b>Pump</b>	4 GPM
<b>Oil Tank</b>	10 gal
<b>Normal Pressure</b>	2100 PSI
<b>Relief Pressure</b>	2200 PSI
<b>Rated Pressure</b>	3000 PSI

### Electrical Specifications

<b>Motor</b>	5 HP, 1725 RPM
<b>Motor Power</b>	208/220/416/440V, 3Ph, 60 Hz/50 Hz
<b>Circuits</b>	115 VAC, 24VDC
<b>Circuits Control</b>	JZ10 Microprocessor
<b>Monitors</b>	80% & 100% full
<b>Enclosures</b>	NEMA 12



**DIMENSIONS**



**PLAN:**

SPECIFIED HOUSE SERVICE & DISCONNECT

TRASH ROOM DESIGN NOTES:	
:	MIN. DOOR WIDTH = 5'-0"
:	ALLOW SPACE FOR STORAGE OF SECOND CONTAINER IF SPECIFIED
:	SEE NFPA-82 FOR ADDITIONAL FIRE PROTECTION REQUIREMENTS